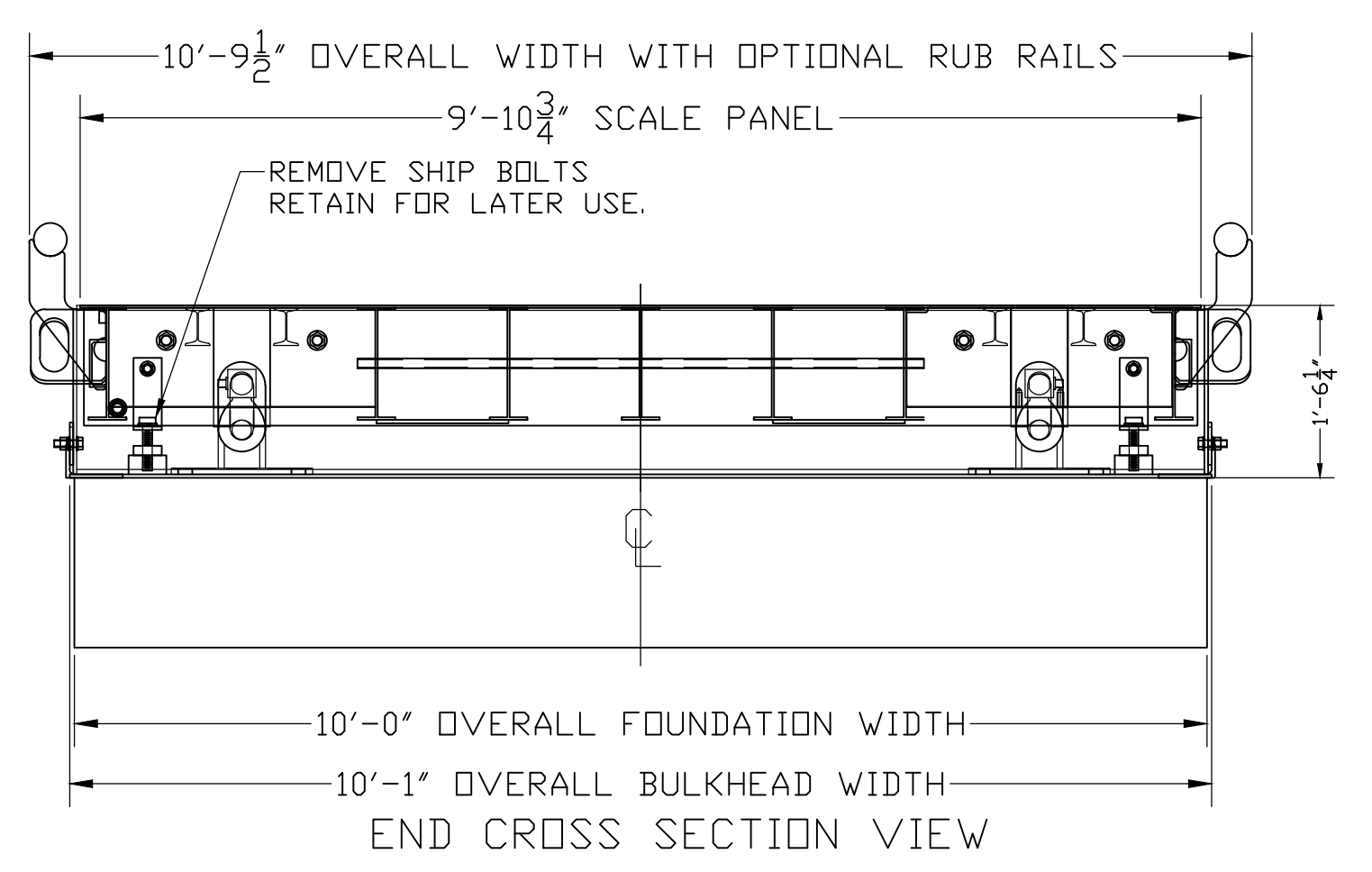


(DRILL TYPE ANCHORS PROVIDED WITH THE SCALE)  
FOR SUBFRAMES (1 PER CORNER REQUIRED)  
3/4 DIA X 5 1/2" STUD TYPE ANCHORS  
DRILL DIA 3/4", DRILL DEPTH 3 1/2"



**ASSEMBLY NOTES:**

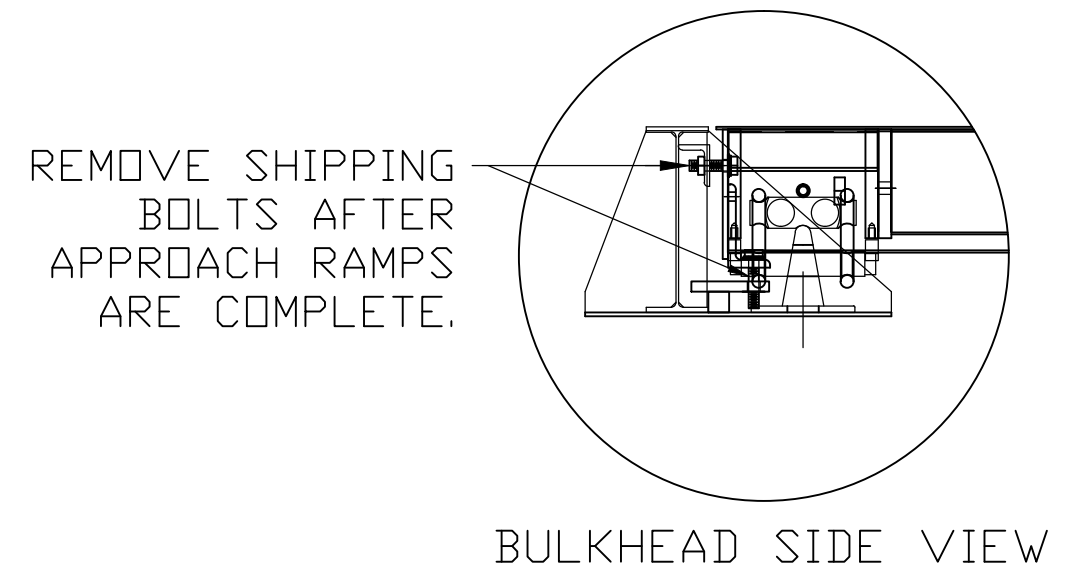
- REFER TO SCALE MANUAL FOR FULL INSTALLATION AND OPERATION INSTRUCTIONS.
- KEEP ALL SHIP BOLTS AND CHECK BOLTS SECURED UNTIL ALL INSTALLATION AND APPROACH RAMP WORK IS COMPLETE.
- PLACE CENTER-BASE MODULE FIRST, FOLLOWED BY END MODULES. PLACE MODULES WITH JBOX MOUNTS ALL ON ONE SIDE AS SHOWN.
- BOLT END PANELS TO CENTER BASE PANEL & SET ANCHORS IN SECTION STANDS.
- IF UNABLE TO ANCHOR STANDS, INSTALL BRACES BETWEEN BULKHEADS AND SECTION STANDS.
- AFTER ALL APPROACH WORK IS COMPLETED, REMOVE SHIPPING BOLTS AND SET PROPER GAPS OF BUMPER (CHECK SYSTEM) BOLTS.
- KEEP SHIPPING HARDWARE FOR LATER USE.

**NOTES:**

- FOUNDATION SHOWN IS DESIGNED FOR SOILS WITH A MINIMUM BEARING CAPACITY OF 3000 PSF AND ADEQUATE DRAINAGE. IF SOIL CONDITIONS DO NOT MEET THESE REQUIREMENTS, ADJUST FOUNDATION OR SOIL CONDITIONS AS REQUIRED.
- IN AREAS OF THE COUNTRY WHERE THERE IS SEVERE FREEZING, INCREASE THE DEPTH OF THE FOUNDATION SO THAT THE BOTTOM EXTENDS BELOW THE FROST LINE, OR PROVIDE A MINIMUM OF 12" FREE DRAINING GRANULAR MATERIAL TO PREVENT FROST HEAVE.
- N.I.S.T. H-44 REQUIREMENTS AND LOCAL WEIGHTS AND MEASURES REGULATIONS MAY REQUIRE INSTALLATION PARAMETERS SOMEWHAT DIFFERENT THAN ILLUSTRATED ON THIS PLAN. IN ORDER TO INSURE COMPLIANCE, CONSULT THE LOCAL WEIGHTS & MEASURES OFFICE PRIOR TO CONSTRUCTION.
- REFER TO SCALE MANUAL FOR INSTALLATION AND OPERATION INSTRUCTIONS.
- A MINIMUM OF 24" OF CLEARANCE IS REQUIRED ON JUNCTION BOX SIDE OF THE SCALE NEAR THE BOX MOUNTS.

| FOUNDATION CONCRETE REQUIREMENTS |                    |
|----------------------------------|--------------------|
| 4000 P.S.I.                      |                    |
| AREA                             | QUANTITIES         |
| PIERS AS SHOWN                   | 6 CU. YD.          |
| FLOOR AT 2" THICK                | 2.5 CU. YD.        |
| <b>TOTAL</b>                     | <b>8.5 CU. YD.</b> |

| FOUNDATION REINFORCING BAR SCHEDULE |     |        |       |            |
|-------------------------------------|-----|--------|-------|------------|
| ASTM A615 GRADE 60                  |     |        |       |            |
| MARK                                | NO. | REQ'D. | SIZE  | LENGTH     |
| HR1                                 | 51  | #4     | 9'-6" | 324        |
| HR2                                 | 60  | #4     | 3'-0" | 120        |
| <b>TOTAL WT:</b>                    |     |        |       | <b>444</b> |



**THIS DRAWING IS SUPPLIED AS CHECKED BELOW:**  
 REFERENCE (ESTIMATES ONLY, NOT FOR CONSTRUCTION)  
 CERTIFIED FOR CONSTRUCTION, THURMAN #  
 CUSTOMER: \_\_\_\_\_ DATE: \_\_\_\_\_  
 CUSTOMER P.O.# \_\_\_\_\_  
 CUSTOMER APPROVAL, RETURN ONE COPY. (ORDER ON HOLD UNTIL SIGNED COPY IS RETURNED)  
 APPROVED AS DRAWN, APPROVED BY: \_\_\_\_\_ DATE: \_\_\_\_\_  
 APPROVED AS NOTED, APPROVED BY: \_\_\_\_\_ DATE: \_\_\_\_\_

| LET | BY  | DATE    | REVISION                              |
|-----|-----|---------|---------------------------------------|
| 2   | JCR | 2/1/12  | REVISED APPROACH NOTE, UPDATED BRACES |
| 1   | LDC | 4/13/11 | ADDED BRACE                           |
|     |     |         | MADE FROM 92388-PV1                   |

|                                 |           |
|---------------------------------|-----------|
|                                 |           |
| 8560 47' X 10' DIAMONDBACK PV   |           |
| FOUNDATION (90K CLC, 3 SEC DB.) |           |
| NO ELEC                         |           |
| DATE                            | 3/18/11   |
| SCALE                           | N/A       |
| DRAWN BY                        | JCR       |
| CHECKED BY                      |           |
| APPROVED BY                     |           |
| DRAWING NUMBER                  | 149163-PV |
| REVISION                        | 2         |