

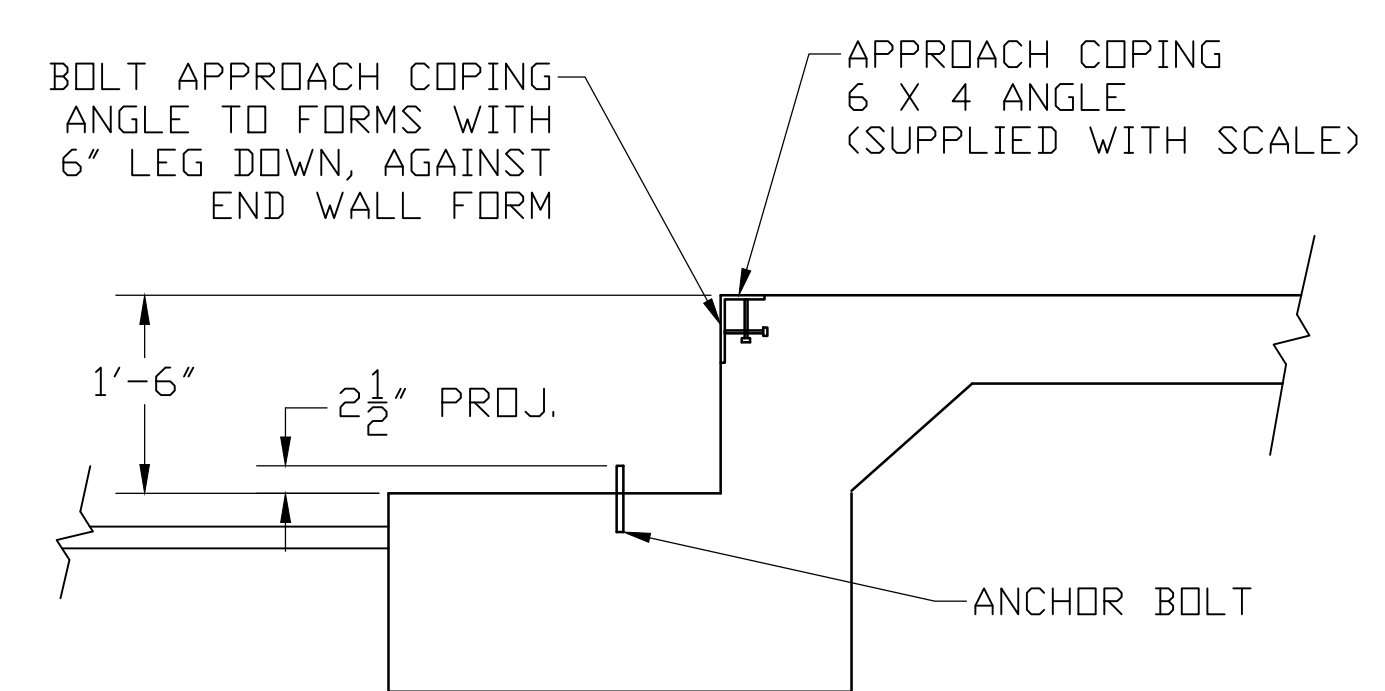
- NOTES:
- FOUNDATION SHOWN IS DESIGNED FOR SOILS WITH A MINIMUM BEARING CAPACITY OF 3000 PSF AND ADEQUATE DRAINAGE. IF SOIL CONDITIONS DO NOT MEET THESE REQUIREMENTS, ADJUST FOUNDATION OR SOIL CONDITIONS AS REQUIRED.
  - IN AREAS OF THE COUNTRY WHERE THERE IS SEVERE FREEZING, INCREASE THE DEPTH OF THE FOUNDATION SO THAT THE BOTTOM EXTENDS BELOW THE FROST LINE, OR PROVIDE A MINIMUM OF 12" FREE DRAINING GRANULAR MATERIAL TO PREVENT FROST HEAVE.
  - N.I.S.T. H-44 REQUIREMENTS AND LOCAL WEIGHTS AND MEASURES REGULATIONS MAY REQUIRE INSTALLATION PARAMETERS SOMEWHAT DIFFERENT THAN ILLUSTRATED ON THIS PLAN. IN ORDER TO INSURE COMPLIANCE, CONSULT THE LOCAL WEIGHTS & MEASURES OFFICE PRIOR TO CONSTRUCTION.
  - REFER TO SCALE MANUAL FOR INSTALLATION AND OPERATION INSTRUCTIONS.
  - A MINIMUM OF 24" OF CLEARANCE IS REQUIRED ON JUNCTION BOX SIDE OF THE SCALE NEAR THE BOX MOUNTS.

FOUNDATION CONCRETE REQUIREMENTS	
4000 P.S.I.	
AREA	QUANTITIES
PIERS AS SHOWN	6 CU. YD.
APPROACHES	6 CU. YD.
FLOOR AT 2" THICK	2 CU. YD.
TOTAL	14 CU. YD.

FOUNDATION REINFORCING BAR SCHEDULE					
ASTM A615 GRADE 60					
MARK	NO.	REQ'D.	SIZE	LENGTH	WT.
HR1	99	#4	9'-6"	628	
HR2	60	#4	3'-0"	120	
VR1	40	#4	2'-6"	67	
TOTAL WT:					815

REINFORCING STEEL NOTES:

- REINFORCING STEEL SHALL BE FREE OF ALL MUD, DEBRIS, CEMENT GROUT, LOOSE RUST, GREASE, AND OIL.
- TACK WELDING OF BARS IS PROHIBITED.

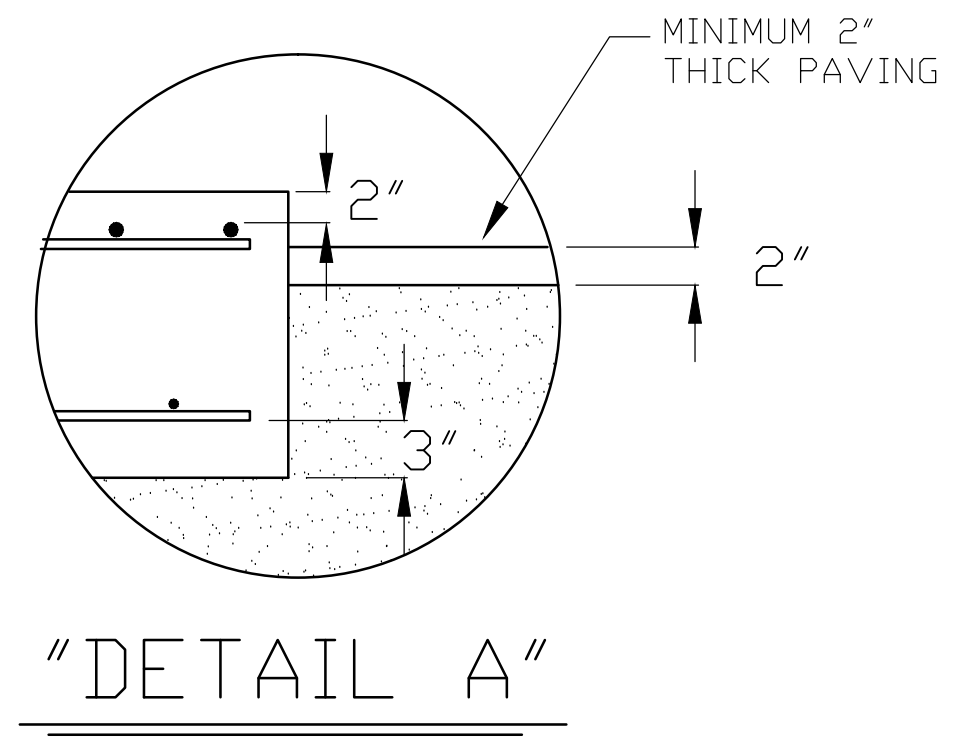


DRILL TYPE ANCHOR INFORMATION (DRILL TYPE ANCHORS PROVIDED WITH THE SCALE)

FOR THE LC STANDS (12 REQUIRED)

5/8 DIA X 6" STUD TYPE ANCHORS

DRILL DIA 5/8", DRILL DEPTH 3 1/2"



THIS DRAWING IS SUPPLIED AS CHECKED BELOW:

REFERENCE (ESTIMATES ONLY, NOT FOR CONSTRUCTION)

CERTIFIED FOR CONSTRUCTION, THURMAN #

CUSTOMER: \_\_\_\_\_ DATE: \_\_\_\_\_

CUSTOMER P.O.# \_\_\_\_\_

CUSTOMER APPROVAL, RETURN ONE COPY. (ORDER ON HOLD UNTIL SIGNED COPY IS RETURNED)

APPROVED AS DRAWN, APPROVED BY: \_\_\_\_\_ DATE: \_\_\_\_\_

APPROVED AS NOTED, APPROVED BY: \_\_\_\_\_ DATE: \_\_\_\_\_

LET	BY	DATE	REVISION
2	JCR	1/31/12	REVISED APPROACH NOTE
1	JCR	3/30/11	12 ANCHORS REQ'D WAS 16

THE MATERIAL AND INFORMATION CONTAINED HEREIN IS CONFIDENTIAL AND IS THE PROPERTY OF THURMAN SCALE COMPANY AND IS NOT TO BE USED, DISCLOSED, COPIED, TRANSMITTED, OR REPRODUCED WITHOUT THE PRIOR WRITTEN PERMISSION OF THURMAN SCALE COMPANY.

UNLESS OTHERWISE SPECIFIED: DIMENSIONS ARE IN INCHES TOLERANCES: FRACTIONS ±1/8" DECIMALS ±.005 3-PLACE DECIMAL ±.0005 2-PLACE DECIMAL ±.0025 HOLE DIAMETERS ±1/32"

MATERIAL: A36 FINISH: N/A

DATE: 11/15/07

SCALE: N/A

DRAWN BY: JTB

CHECKED BY: \_\_\_\_\_

APPROVED BY: \_\_\_\_\_

8560 D'BACK 90K CLC 40' X 10' FOUNDATION (3 SECTION, DB LC)

MODEL: SHEET 1 OF 1

DRAWING NUMBER: 92369-FT

REVISION: 2

